

ous . property



17 Globe Place Port Adelaide SA

3 2 4

Located in the quiet, modern development running alongside the Port River and in the other direction, just a short walk to the new Port Plaza, shops, cafes location and supermarkets.

View : <https://www.ous.property/sale/sa/western-beachside-suburbs/port-adelaide/residential/house/6202084>

Offering an easy lifestyle with all amenities within easy reach yet still quiet and tranquil.

This single storey courtyard home is positioned on an easily manageable block of approximately 388 sqm yet offers a sizeable interior layout.

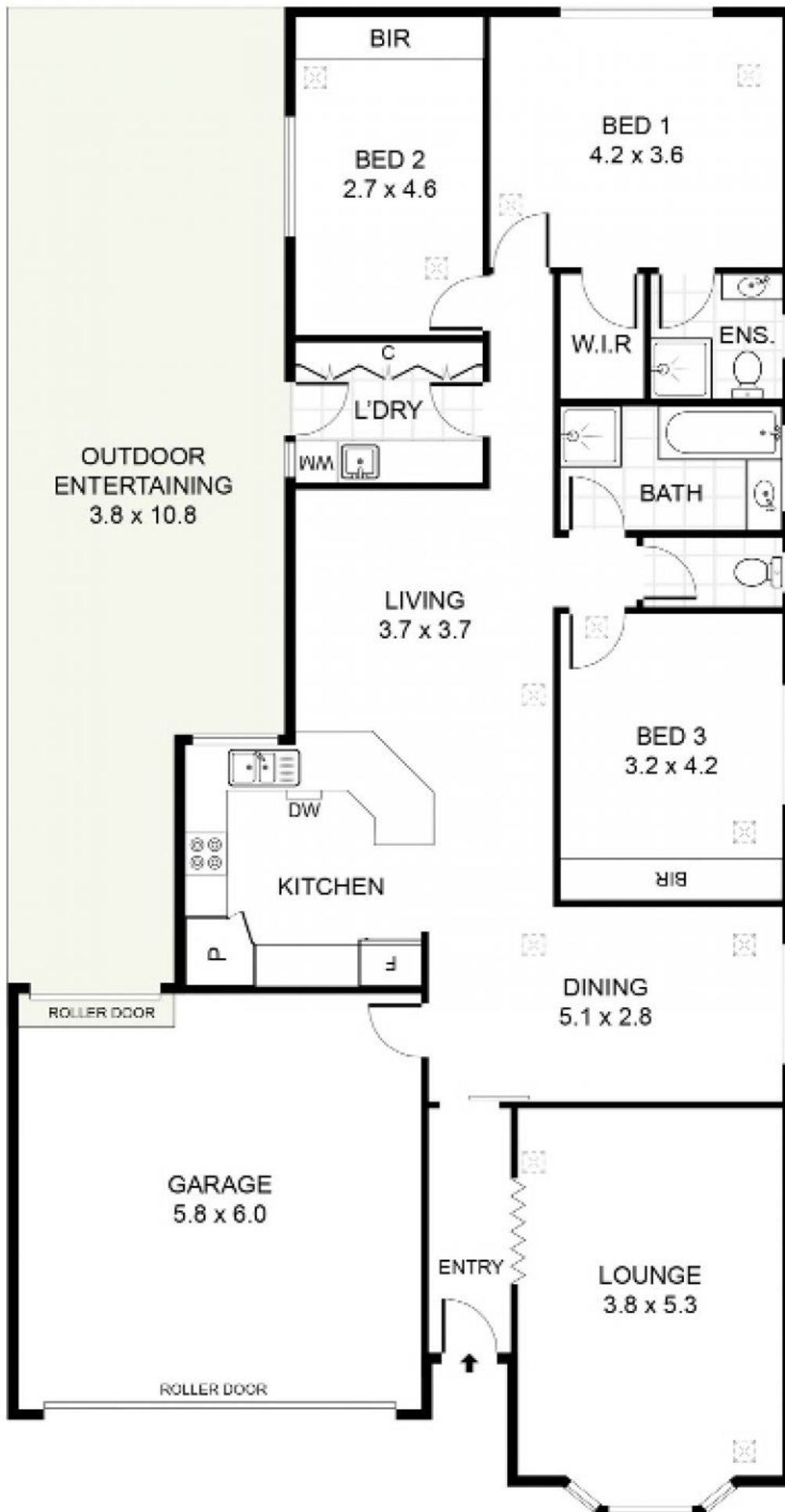
Offering a formal lounge room, plus a large open plan family/living/dining area in the centre of the home.



Nick Tuck
7225 9800

There are three bedrooms, master with walk in robe and ensuite, all located towards the back of the home.

<https://www.ous.property>



This drawing is for illustrative purposes only.
 All measurements are approximate. Details to be relied upon should be independently verified.