



4/8 Esplanade Somerton Park SA

4 🏠 3 🚗 4 🚗

Rarely will you find a luxury beachfront penthouse of such distinction. Architecturally designed on a prized corner allotment, the 398sqm floorplan features floor-to-ceiling glass and multiple balconies spanning 96sqm to showcase the finest ocean outlooks.

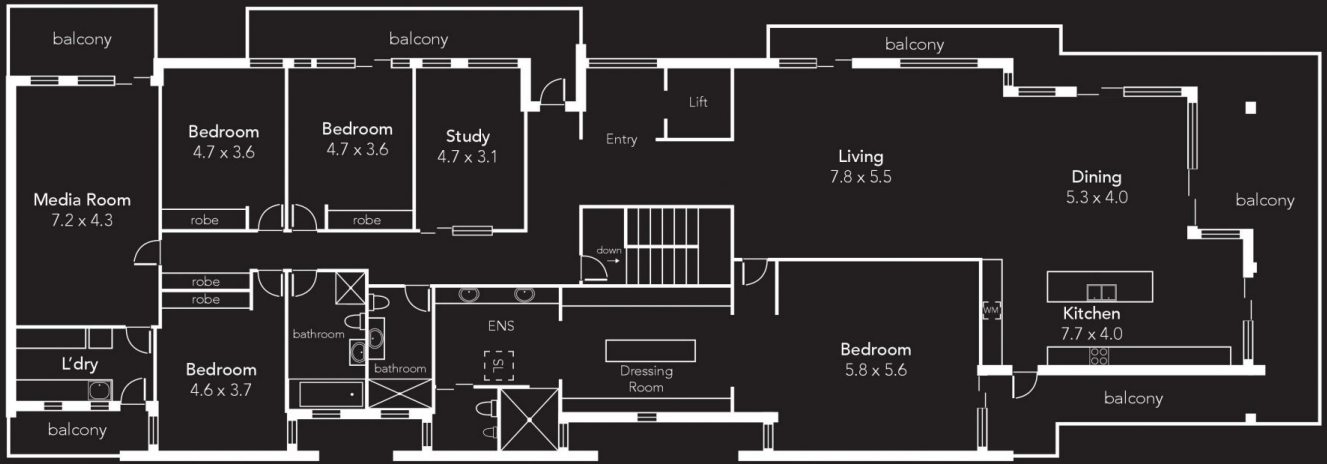
Inspired custom design sees high calibre appointments throughout, where indoor/outdoor luxe living includes unrivalled space and sublime style.

Primed for impressive executive entertaining, this home features a sophisticated kitchen complete with top-of-the-line Miele appliances. The island bench includes a breakfast bar but the adjacent bar embracing the oceanfront aspect is surely the most inviting spot for your morning coffee.

Price : \$ 3,300,000
Building Size : 398 sqm
View : <https://www.ous.property/sale/sa/western-beachside-suburbs/somerton-park/residential/unit/6463334>

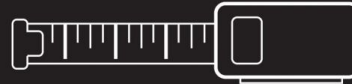


Laz Ouslinis
7225 9800



Area (Estimate only)	
Living Area	398.39 m ²
Balcony	96.12 m ²
Total	494.51 m²

*To check measurements



Please ask your agent
for a tape measure