

# ous . property



8/202 Payneham Road Evandale SA

3  1  2 

OFFERS CLOSE @12PM TUESDAY 26TH APRIL

PLEASE CONTACT AGENT TO ARRANGE A PRIVATE INSPECTION

**Price** : \$ 390,000

**View** : <https://www.ous.property/sale/sa/eastern-suburbs/evandale/residential/unit/6855967>

So close to the city and offering a vibrant cosmopolitan lifestyle amidst popular shopping precincts, cafés and public transport, it's hard to imagine a home boasting such peaceful and private serenity - but here it is.

Embracing the lush and leafy surroundings in the optimum spot at the rear of a beautifully-presented small group, this three bedroom, first floor unit welcomes buyers with a fresh and inviting ambience and unexpected spaciousness.

First home buyers, downsizers and investors will find a tastefully renovated, freshly painted, spacious interior

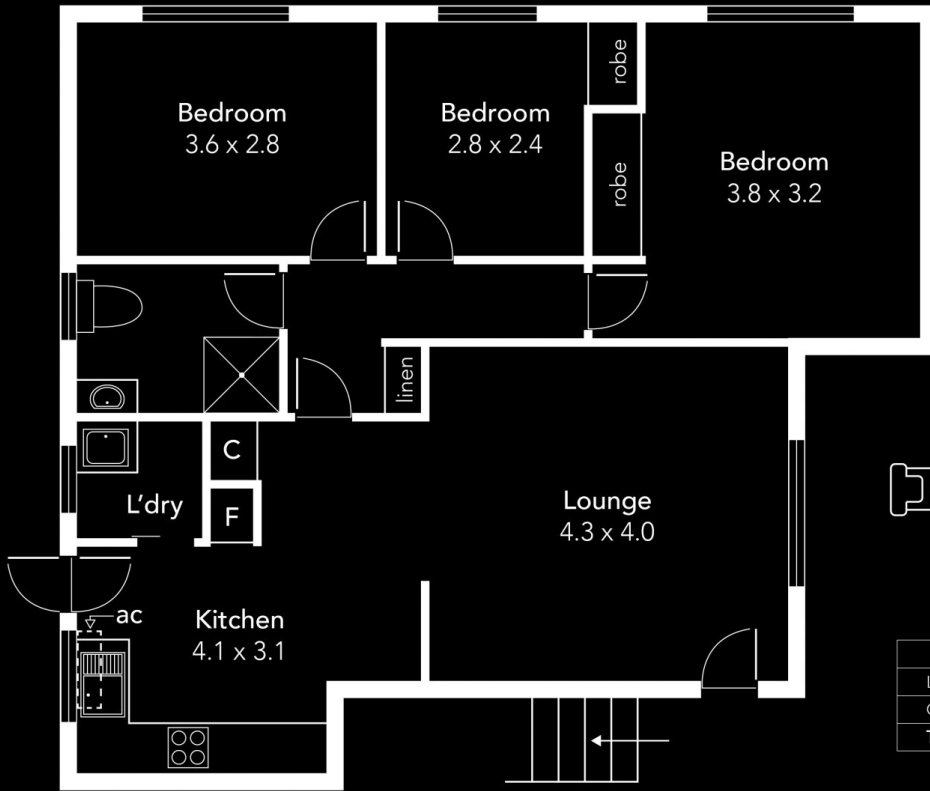


**Nick Tuck**  
7225 9800

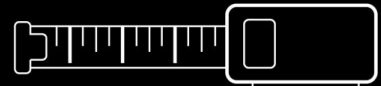


**Matt Plumridge**  
7225 9800

<https://www.ous.property>



\*To check measurements



Please ask your agent for a tape measure

Area (Estimate only)	
Living	76.8 m <sup>2</sup>
Car Space	17.6 m <sup>2</sup>
<b>Total</b>	<b>94.4 m<sup>2</sup></b>