

ous . property



12 Yao Cove New Port SA

3  2  2 

Spanning 3 light-filled levels each with views to the Port Adelaide River, the 2007-built property boasts multiple semi-outdoor entertainment & relaxation spaces including two substantial balconies, an alfresco area & a gorgeous sunroom.

The lower level includes a double garage with internal access & a super-sleek, quality kitchen with all stainless appliances, pantry, dishwasher & gas cooktop. This magnificent kitchen takes pride of place on the ground floor, linking the fab alfresco space & the luxe lounge, through to the funky dining area & semi-open sunroom beyond.

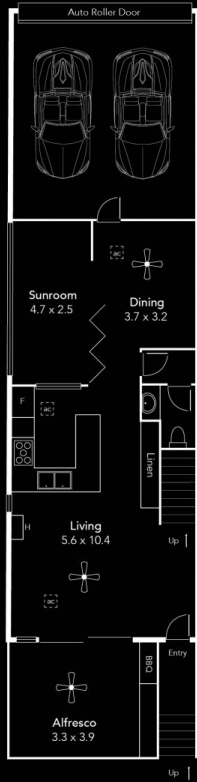
3 glorious bedrooms feature fans & robes while the master suite on level one enjoys a walk-in robe & an exquisite his'n'hers ensuite with spa bath & shower. All 2.5

View : <https://www.ous.property/lease/sa/western-beach-side-suburbs/new-port/residential/house/7861725>

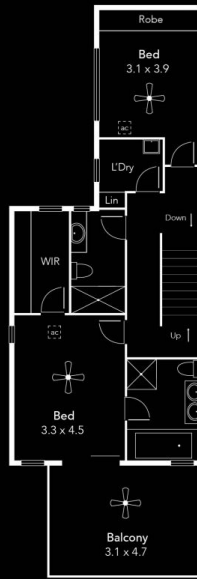


Kristal Kavanagh
7225 9800

<https://www.ous.property>



Ground Floor



First Floor



Second Floor

* To check measurements...

 Please ask your agent
 for a tape measure

*This drawing is for illustration purposes only. All measurements are approximate and details intended to be relied upon should be independently verified.